

Single Acting Hollow Piston Cylinders with Spring Return

700 Bar



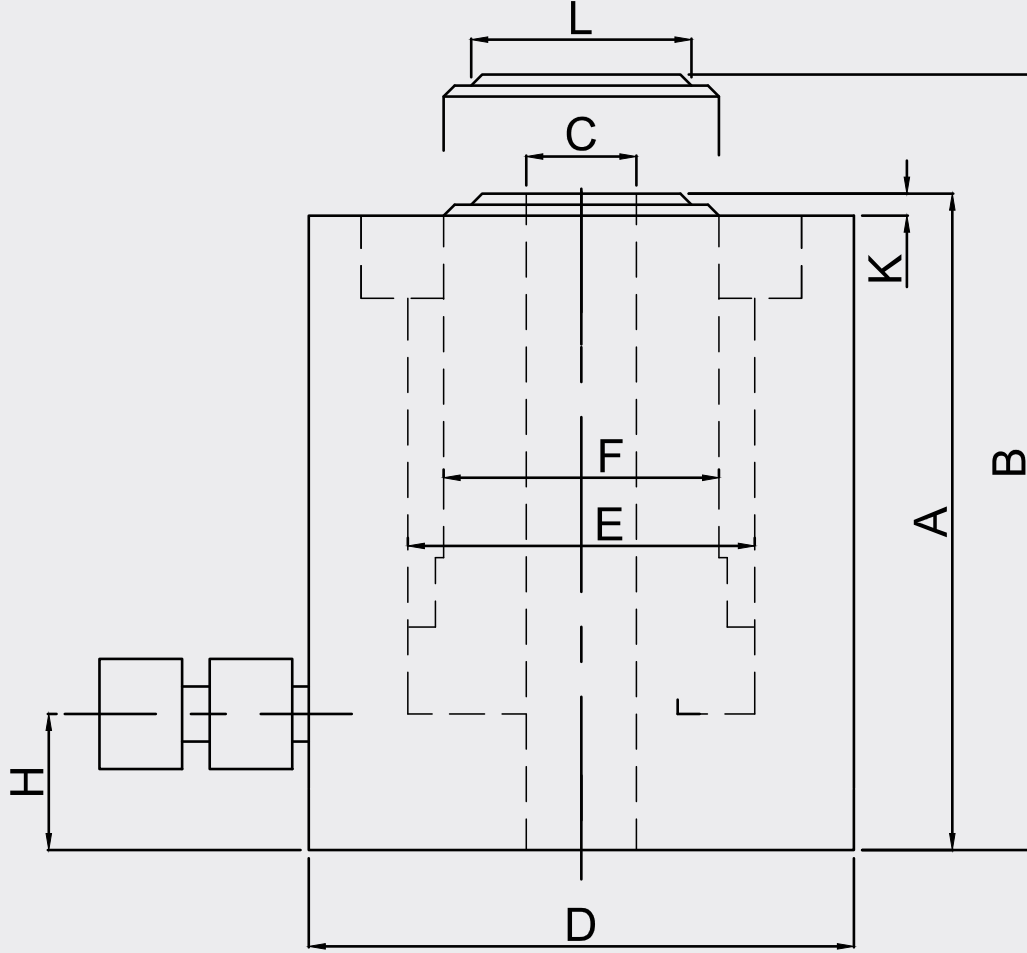
- Single acting, spring assisted return
- High strength alloy steel design for multi purpose use
- They have hand chrome-plated piston rods with through-holes
- Designed for carrying out push and pull operations
- Available in capacities from 15 to 150Tn, stroke up to 100mm
- All cylinders are working pressure of 70 MPa

HCS series cylinder range is extremely versatile for use in tooling, maintenance and tensioning applications. Specifically designed with a hollow piston to enable a rod or cable to be passed through the entire cylinder length for applications where a pulling force is required.

Technical Data

Model	Working press. MPa	Capacity t	Stroke mm	Stroke volume cm ³	Piston Ø mm	Piston area cm ²	Weight kg
HCS 15/50	70	15	50	108	63	21,55	8,6
HCS 35/50	70	35	50	256	95	51,25	17,8
HCS 60/70	70	60	70	589	125	84,24	25
HCS 100/75	70	100	75	1113	170	148,44	56
HCS 150/100	70	150	100	2241	200	224,13	120

Technical Data



Model	A	B	C	D	E	F	H	K	L
	mm	mm	mm	mm	mm	mm	mm	mm	mm
HCS 15/50	170	220	20	99	63	48	24,5	4	40
HCS 35/50	180	230	35	139	95	75	29	4	65
HCS 60/70	250	320	55	169	125	95	34	4	85
HCS 100/75	250	325	80	219	170	135	33	10	125
HCS 150/100	345	445	86	278	200	150	43	15	150